

# CAS Hemera MOBii

## Mobility and Intelligence



**MOBii** is an Android application with a Web management module that provides significant time reduction field operations, with online service orders update in the collector, in addition to meters parametrization automatic execution with no personal intervention.



### Metering reading:

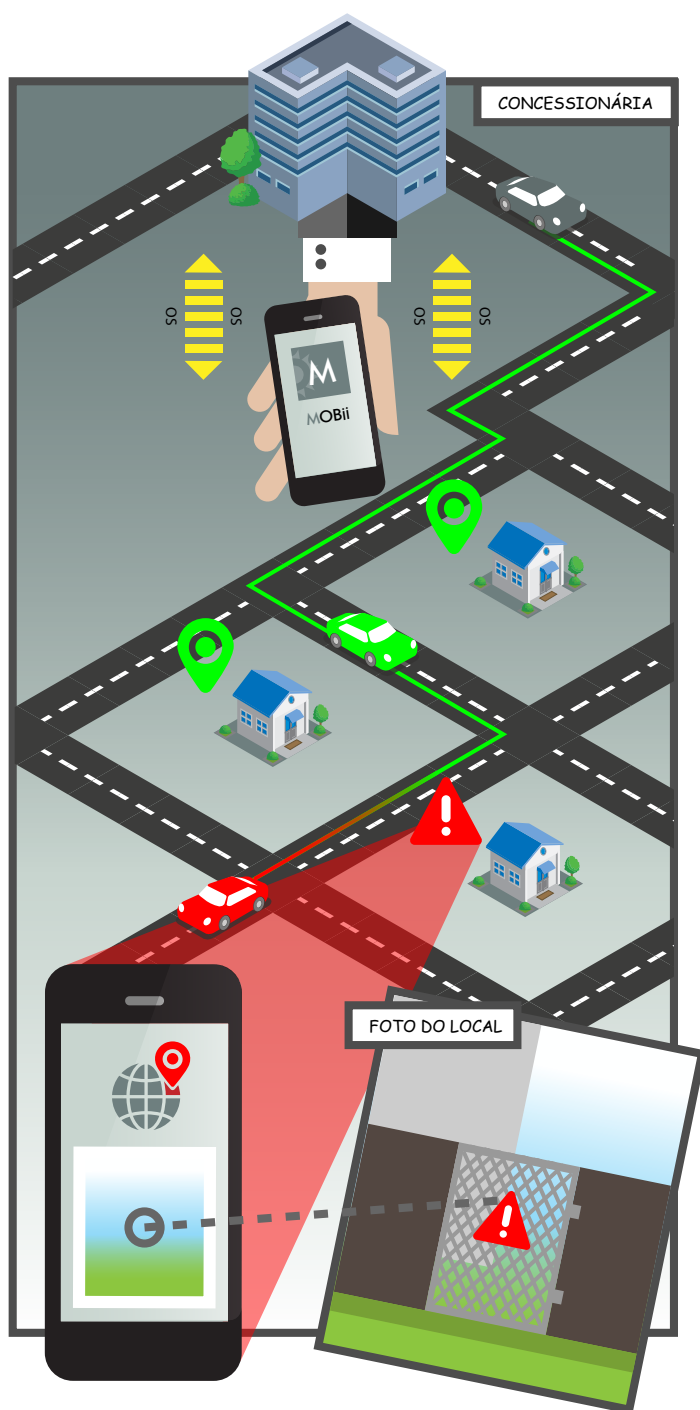
In regions with no telemetry, reader personal collect meter data for billing, which can be transmitted immediately to the utility or, in case of no network, automatically at the moment the device finds a Wi-Fi or 3G connection.

### Parameterization:

The web manager performs the Software management, which allows sending a new parameter to the meter whenever necessary, before the reader team leaves to field. Upon arriving at its destination and initiating the metering data collection, the new parameters are updated with no need of personal interference, that is, in a transparent and risk-free manner.

### Program Load:

The same process described for parameterization applies in this case. The difference is that a specialized professional prepares and controls this task.



### Permission Control:

- Readers Privileges configuration.
  - Sporadic reader.
  - Service Order Reader.
  - Advanced Reader.
- Integration with Hemera C&I.
- Read - Storage - Synchronization.
- Service Order Dispatch.
- Detailings with pictures.

### Customization:

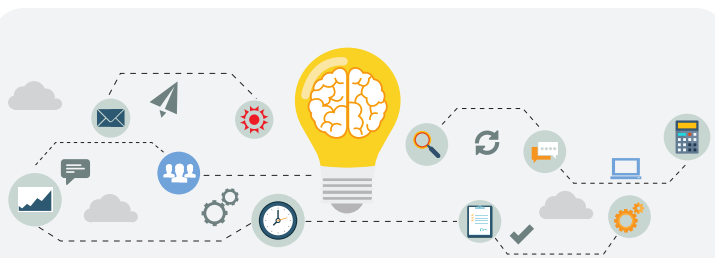
It is possible to customize systems integration to automatically provide new Service Orders creation, according to the customer's needs.

### Service order dispatch:

The reader personal receives in the application, the Service Orders load for a certain period, through the integration between the web manager and the utility commercial system. In addition, once in field, it is possible to remotely receive any changes, new information (new service order, maintenance order etc.) from the web manager and synchronize the completion of a Service Order with the web manager.

### Routing:

In the web manager, it is possible to map the best route to execute all Service Orders. The software also makes possible to verify if the field professional followed the defined route and the start and end time for each service. If it is not possible to execute a Service Order due to force majeure (no access to the meter, absent resident, etc.), the professional takes a local picture and registers the reason for the obstruction. The photo is archived and synchronized with the web manager, with information about where it was taken (lat long).



### Implementing additional functions:

- Customer inspection.
- Irregularity occurrence forms.
- Residential customers reading.
- Read and print simultaneously.
- Integration with Hemera Residential and Gauss system.
- Integration with other MDMs available in the market.