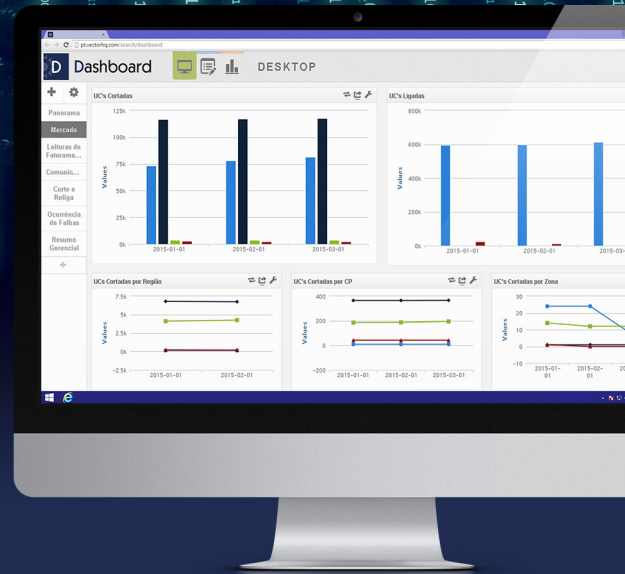


CAS Hemera Dashboard



Analytical view for best operational management based on utility analysis and quality processes.

Dashboard system was developed to support new management control demands for billing and metering processes. These demands are mainly due to:

- Need for resources that favors the operation control and management follow-up.
- Growing data volume and the operation complexity.
- Interest in a simplified view to streamline and promote decision-making assertiveness.

From advanced features, the module provides a consolidated view of data extracted from various sources and, natively, from the Hemera platform, with preconfigured reports and graphics.

In addition, CAS Professional Services expertise enables to create new reports with no need for tool coding.

Key tools and resources

- Desktop creations allow the subdivision of interest topics according to users profile and access permissions.
- A set of rules and criteria for applying filters to charts and reports makes the tool assertive in making priority information available.
- It is possible to add the desirable amount of widgets to each desktop by creating panels with unique information to each user business area.
- Each widget is configurable with different views for charts, tables, and maps.
- Customizable dashboards per user.
- Export to Excel, CSV, HTML, and PDF files.

Preset Reports

Field Facilities Overview

It allows the field facilities information view compared to commercial systems records. With data obtained from these records, it is possible to quantify and qualify meters installations in: clandestine installations, billed installations, meters without installations and public lighting.

In addition, it presents an overview of the field installations evolution by installation type with consolidated queries information: monthly, weekly, monthly by region, monthly by Primary Concentrator and monthly by zone.

Connected Installations Overview

This statement presents a measurement by connected and disconnected customers, relates them to field meter qualifying and reports problems.

Outage Overview

This statement presents an overview by outage time-lapse range, providing graphical widgets expandable in details in the metering points map.

Overview of Alarms

This statement presents a view by alarm type, offering graphical widgets expandable in details in the metering points map.

Billing Reading Performance

Provides effectiveness index for tracking the billing reading performance. The comparative report compares the number of requested readings to the number of sent readings and enables analysis refinement to find possible failures.



Above: Market Charts.

Communication Performance

Monitors communication performance in different metering elements, such as: balance meters, meters, customers installations, communication modules, concentrators, among other network elements.

Connect & Disconnect Service Performance

Monitors customer Connect & Disconnect operations performance from commercial systems service orders and compares to the effectively performed registers from CAS Hemera platform modules.

Below: Connect & Disconnect Chart
- Performed Services Notes - Type x Month.

