

RS2000 Smart SF Bi Lite

code 100.0168.00



Two-phase Backpack

Sigfox communication technology for data transmission independent from the network infrastructure, with compressed and optimized radio protocol. Software-based communication solution.

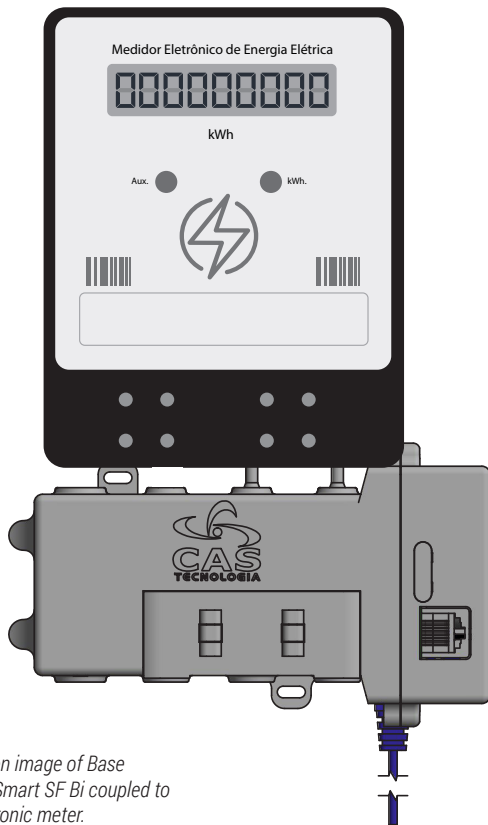


Illustration image of Base RS2000 Smart SF Bi coupled to the electronic meter.

CAS Backpack

The Smart generation of the CAS Technology Backpack is part of the solutions for Smart Management of Electricity metering data, using IoT communication technologies that enable efficiency, high availability and security in remote and continuous monitoring of distribution and consumption.

Features:

- Built-in intelligence for automatic data collection.
- Plug & Play Technology.
- Long range technology.
- Two-way communication.
- Easy coverage of large geographic areas.
- Low energy consumption.
- Low cost for data transmission.
- Low deployment cost, without a procedure change for installation in the field.
- Easy configuration and total asset control in the field.
- Diagnostics and protection against metering system tampering.
- Operates indoors.
- Customer environment protection with intrusive voltage sensing.
- Multi-manufacturer approach: freedom to choose meters with remote Connect & Disconnect.

Technical Specification

Transmission technology	SIGFOX
Connector A	Phase A output
Connector B	Phase B output
Connector D	NEUTRAL phase output
Connector E	RJ45 Connector EIA-232 Communication
Connector F	40-cm AC Power Supply Cable
Frequency	RCZ2 902,2~905,2MHz RCZ4* 920,8~922,3MHz (* RCZ4 only utilized outside Brazil (Latin America))
Maximum output power	22.5dBm
Antenna	Internal
Average consumption	3W at 127VAC - meter not coupled
Power Supply	85~264VAC - according to the meter to be used
Max. Current (relay cut)	100A
Max. Voltages (relay cut)	250Vca
Operating temperature	0 to 70 °C
Sizes	146 x 85 x 78mm
Weight	359g
IP Code	IP50

Technical Design

