

Standard Satellite

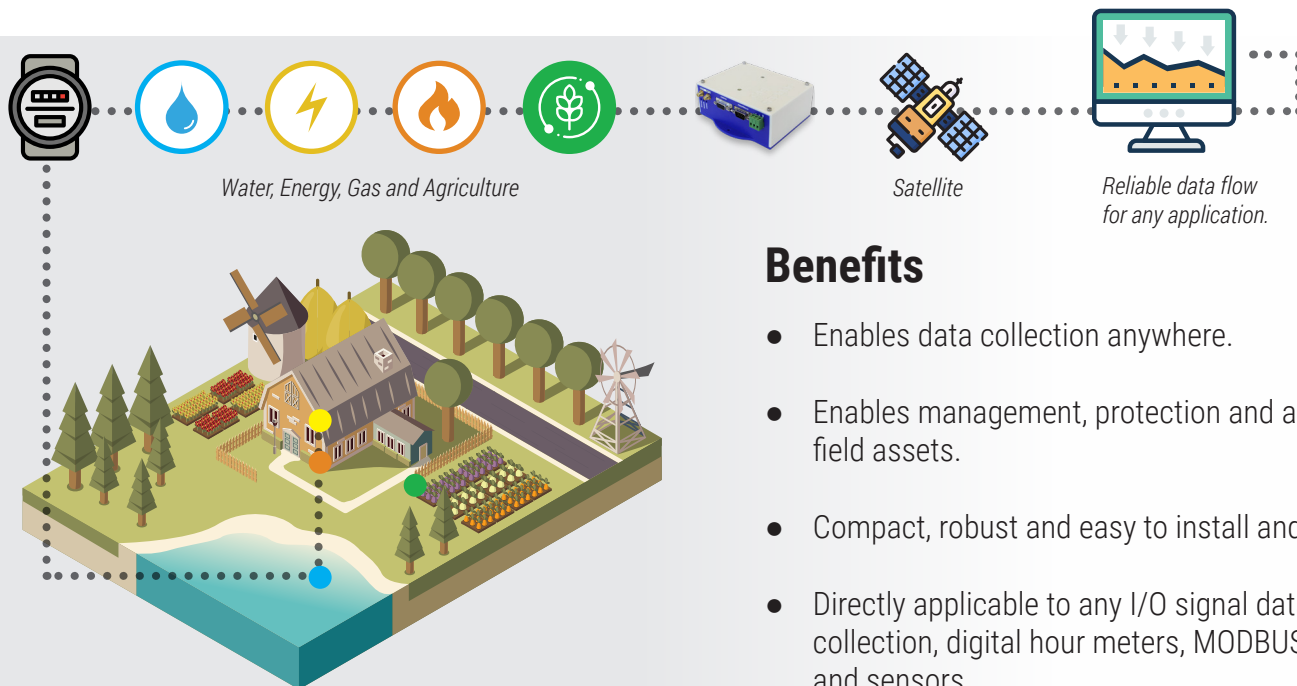
ref. 100.0184.00



Flexible Remote Terminal Unit for Robust IoT Applications

Developed by CAS Tecnologia using a robust platform, proven on Utilities applications for more than a decade, the RS2000 Standard Satellite addresses IoT applications on remote locations with global coverage from Swarm Technologies.

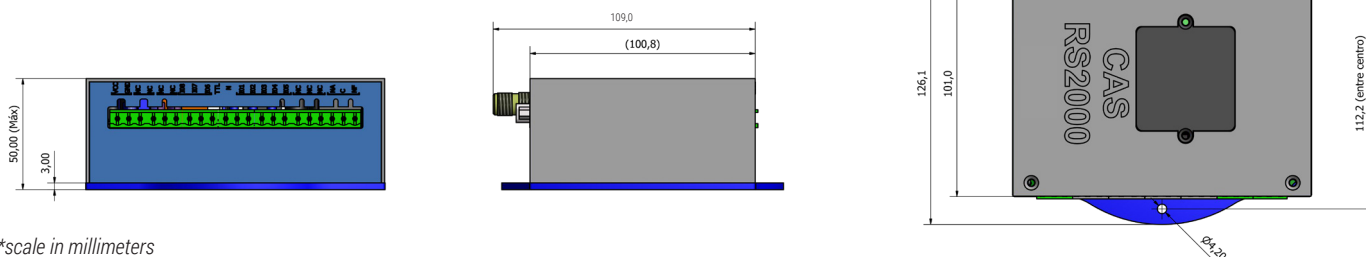
Our device is part of a larger family of devices and accessories created to offer affordable remote communication for any IoT Application.



Benefits

- Enables data collection anywhere.
- Enables management, protection and access to field assets.
- Compact, robust and easy to install and operate.
- Directly applicable to any I/O signal data collection, digital hour meters, MODBUS meters and sensors.

Technical Drawing



*scale in millimeters

Technical Specification

Network	<ul style="list-style-type: none">• Satelital – VHF• 137 – 138 MHz (downlink)• 148 – 150 MHz (uplink)• Bit rate 1 kbps• GPS (lat/lon/alt) 1Hz
Serial Communication	<ul style="list-style-type: none">• RS232 – Programmable Speed from 300 to 115200bps• RS232 – Local Configuration to 4800bps• RS485 – Support for MODBUS/RTU devices• MODBUS over RS232 or RS485 with programmable data-collection profiles for push-in data acquisition
Input/Output Port	<ul style="list-style-type: none">• 5 Digital inputs with optical coupling – DC(2) and AC(3)• 3 Digital inputs/outputs (3)• 2 A/D inputs• 3 Open collector outputs• 1 Relay output – 15A
Connector A	RS232 DCE connector DB9M
Connector B	RS232 DTE connector DB9F
Connector C	SMA – Antenna VHF
Connector D	SMA – GPS
Connector E	Inputs and outputs in 15A removable terminal block – 300VAC – wire up to 2.5mm ²
Accessories	VHF Antena with ground-plane, GPS Antenna and extension cables
Power Supply	<ul style="list-style-type: none">• AC power supply directly connected to unit 65~280Vac@50 or 60Hz• DC power supply directly connected to unit 10~30VDC• Average consumption: 8Watts with 15Watts peak
Operating Temperature	-20°C to +70°C
Dimensions	51 x 133 x 101mm
Weight	460g
IP Code	IP50W