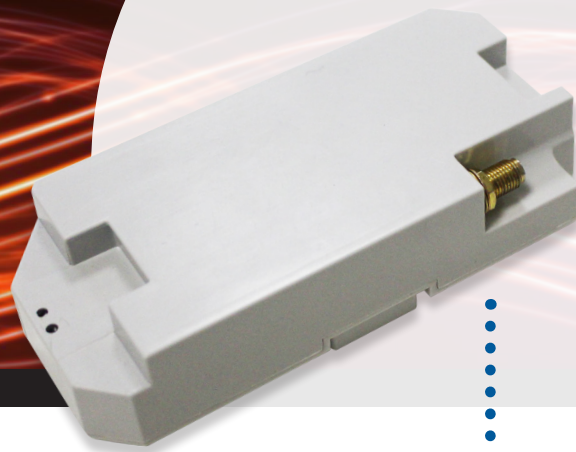
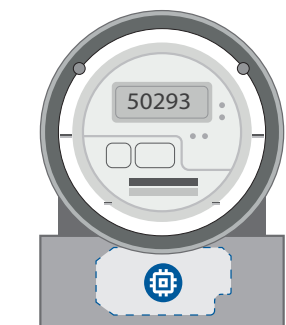


# RS2000 EVO ZEUS

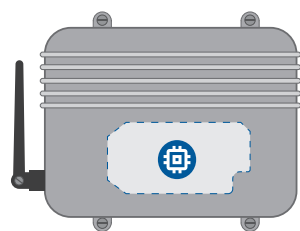
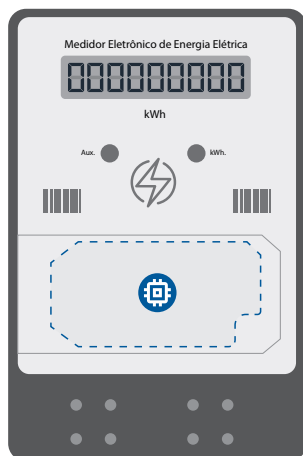
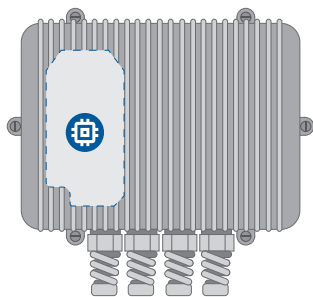
ref. 100.0158.00 / 100.0158.50










## Integrated Remote Terminal Unit for Meters



Allows integration with various models of electronic meters, balance meters and concentrators.



### Features:

-  **3G/GPRS** remote communication, with possibility of dual SIM Card.
-  Data interface with meter on its **native protocol**, allowing for collecting readings from loggers, instant values, configuration and activations such as Connect & Disconnect.
-  **Local configuration** via **Bluetooth** interface.
-  **Field contingency** for Connect & Disconnect and reading via Bluetooth interface.
-  **LAST GASP** alarm.
-  Internal equipment **temperature** indicator.
-  **Remote firmware upgrade** for the remote terminal unit.

## Remote Terminal Units from CAS Tecnologia

Designed to offer connectivity to the most varied businesses, adding remote communication ability to different types of equipment and enabling efficient remote management, control, monitoring and supervision.

They provide flexibility and various interface alternatives with devices that require telemetry, metering, remote control, monitoring and supervision.

Components with advanced technologies, combining WAN/LAN networks and Bluetooth flexibility - when necessary - and data transmission via various types of cell phone networks or radio frequency if mobile telephony networks are not available.

## Technical Specification

Transmission technology	UMTS 800/850/900/AWS/1900/2100 MHz GSM 800/900/1800/1900 MHz WCDMA/HSDPA/HSUPA, UMTS, GSM/GPRS/EDGE Dual SIM CARD
Communication ports	Serial interface for communication with the meter Bluetooth interface for local configuration
Input/output ports	1 digital input for detecting power failure
Connector A	12-way connector for power supply and communication with the meter
Connector B	SMA - RF antenna (100.0158.00) Without (100.0158.50)
Average consumption	2W
Antenna	External (SMA connector) - 100.0158.00 Internal, 2dBi gain - 100.0158.50
Power Supply	7VDC
Operating temperature	0 °C to +70 °C
Sizes	113,5 x 52 x 23mm (WxHxD)
Weight	200g
IP Code	IP50W

## Technical design

