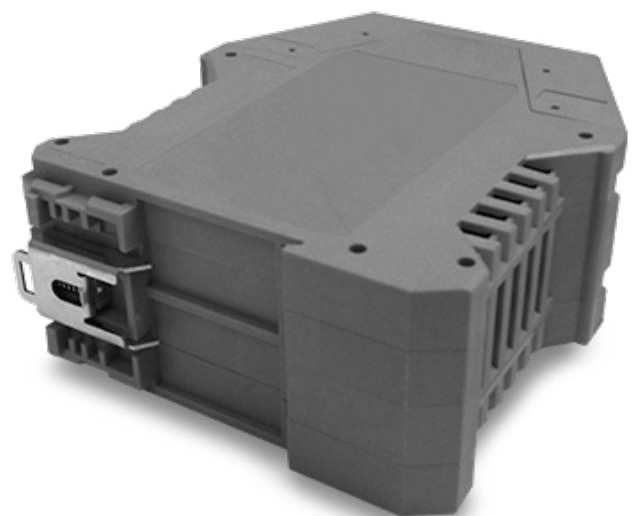


Technical Specification

Source Type	External
Connector A	Power Input
Connector B	Power Output
Input Voltage	95~250VCA (2F+N+terra)
Output Voltage	+24VCC
Output Power	24W
Output Voltage Precision	+/-5%
Input Frequency	50~60Hz
Input Filter	Standard Mode
Protection against Short Circuite and Overload	Yes
Dimensions	111,5 x 99,5 x 45mm
Weight	185g

**CAS Power Supply AC/DC 24VDC 1A - ADAM**

24W

COD. 132.0023.00