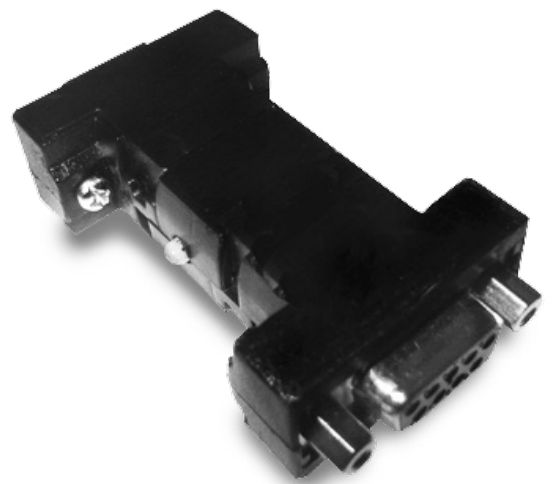


cod. 101.0011.00

Technical Specification

Compatibility or Technical Standard	EIA-232 - EIA-485
Connector A	Female DB9 - RS485 Serial
Connector B	Male DB9 - RS232 Serial
Transmission Rate	600~19200bps
Power Supply	+5VCC - 9 Pin Connector A
Dimensions	63 x 33 x 17mm
Weight	25g
IP Code	IP50W



	RS2000 Converter RS232/RS485
	RS232/RS485
	COD. 101.0011.00