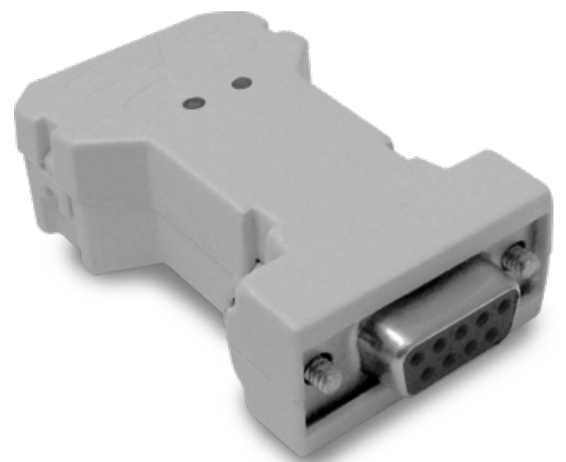


Technical Specification

Compatibility or Technical Standard	EIA-232 - M-BUS
Connector A	Female DB9 - RS232 Serial
Connector B	M-BUS (3 Devices)
Connector C	J4 Power Input - External Power Supply
Transmission Rate	9600bps
Power Supply	+5VCC - External Power Supply or 9 Pin Connector A
Dimensions	65 x 33 x 18mm
Weight	20g
IP Code	IP50W



	RS2000 Converter MBUS RS232 Master 3
	RS232/M-BUS
	COD. 100.0072.00