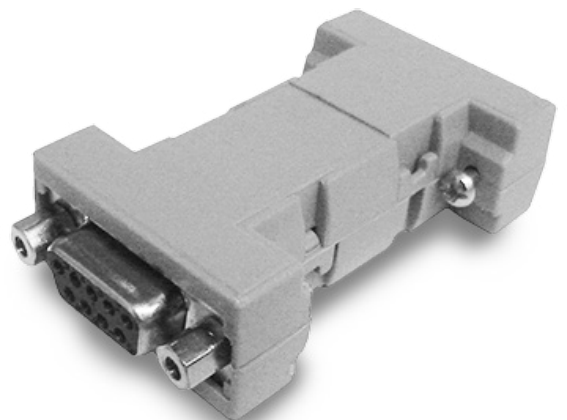


cod. 101.0012.00

### Technical Specification

Compatibility or Technical Standard	EIA-232
Connector A	Female DB9 - RS232 Serial
Connector B	Female DB9 - RS232 Serial
Transmission Rate	110~115200bps
Power Supply	Not Applied
Dimensions	63 x 33 x 17mm
Weight	20g
IP Code	IP50W



	RS2000 Adapter Cross (NULL MODEM)
	RS232
	COD. 101.0012.00